



Russley Golf Learning Centre

**COACHING,  
CLUB-FITTING  
AND  
DEVELOPMENT**

*Russley Golf Club*  
*428 Memorial Ave, Burnside, Christchurch*  
*03 358 4612*  
*golfshop@russleygc.co.nz*  
*www.russleygolflearningcentre.com*



# **TABLE OF CONTENTS**

<i>INTRO: Who we are and what we do??</i> .....	<b>3</b>
<i>PRIVATE GOLF INSTRUCTION</i> .....	<b>4</b>
<i>CLUB FITTING AND ADDITIONAL SERVICES</i> .....	<b>6</b>
<i>DISTANCE GAPPING SESSION on Trackman</i> .....	<b>9</b>
<i>GOLF PACKAGES</i> .....	<b>10</b>
<i>LEARN TO PLAY GOLF PROGRAM</i> .....	<b>11</b>
<i>JUNIOR COACHING</i> .....	<b>15</b>
<i>DRIVING RANGE AND PRACTICE</i> .....	<b>18</b>
<i>THE TEAM</i> .....	<b>19</b>

Follow us on Facebook and Instagram !



Russley Golf Shop and Learning Centre



@ russleygolflerningcentre



# Who we are and What we do??

*The Russley Golf Learning Centre's unique approach to individual golf instruction is unparalleled in the golf industry. Each student has the opportunity to work on any aspect of the game in a comfortable setting conducive to improvement.*

*Our team has the ability to cater for ALL golfers; whether you are a beginner looking to get into the game, an avid golfer looking to cut a few shots off your handicap, or an ambitious golfer with big dreams.*

*We have the recipe for success!*

*Our facilities are one of the finest around the country and we utilize some of the latest technology in golf instruction:*

- *Professional video equipment for digital analysis*
- ***Trackman launch monitor*** to assist us with coaching and club fitting

*Trackman launch monitors have the ability to measure shots ranging from short pitches to 400-yard drives, pinpointing a golf ball's landing position to within 1 foot for every 100 yards of travel.*

*Launch Monitors also generates a unique data set – 27 specific measurements that accurately identify the impact and ball flight conditions for each shot. All clubface, swing and ball-flight data – from club-speed and hang-time to shot dispersion – are measured and recorded for illustrative and comparative purposes.*



- ***BodiTrak Golf***

*Force & pressure analysis is a pillar of modern golf coaching.*

*From TOUR players to club players and even beginners, and from full swing to putting; **Stay on the leading edge, and make performance changes that stick.***

# PRIVATE GOLF INSTRUCTION

## 30 minute "QUICK FIX" session

*If you're seeking sustained, long-term improvements, quick fixes or 'Band-Aids' may not be the optimal solution. However, in situations where urgent assistance is required and time is a constraint, we invite you to visit us for a swift tune-up.*

	<b>Non Member</b>	<b>Junior</b>	<b>Member</b>
<b>Moonhak Lee</b>	\$75	\$65	\$70
<b>Mark Guy</b>	\$70	\$60	\$65
<b>Hillary O'Connor</b>	\$70	\$60	\$65
<b>Shaun Jones</b>	\$65	\$60	\$60
<b>James Robinson</b>	\$60	\$50	\$55
<b>Mckenzie Selinger</b>	\$60	\$50	\$55

## 60 minute 'IMPROVEMENT' session

*Learn a skill... Understand the skill.... And work with your instructor through the session to develop your game.*

*At the completion of each session, you will have the knowledge to be able to take what you have learnt and apply it effectively into your own practice.*

	<b>Non Member</b>	<b>Junior</b>	<b>Member</b>
<b>Moonhak Lee</b>	\$115	\$100	\$105
<b>Mark Guy</b>	\$110	\$95	\$100
<b>Hillary O'Connor</b>	\$110	\$95	\$100
<b>Shaun Jones</b>	\$105	\$95	\$95
<b>James Robinson</b>	\$100	\$85	\$85
<b>Mckenzie Selinger</b>	\$100	\$85	\$85

## 90 minute 'ADVANCED' session

*A comprehensive evaluation of your game with your instructor that gives you an insight into how to take what you learn on the practice tee onto the golf course.*

	<b>Non Member</b>	<b>Junior</b>	<b>Member</b>
<b>Moonhak Lee</b>	\$175	\$150	\$165
<b>Mark Guy</b>	\$155	\$130	\$145
<b>Hillary O'Connor</b>	\$155	\$130	\$145
<b>Shaun Jones</b>	\$150	\$130	\$135
<b>James Robinson</b>	\$145	\$115	\$125
<b>Mckenzie Selinger</b>	\$145	\$115	\$125

*Cancellations need at least 24hrs notice  
otherwise session will be charge.*

## Half Day VIP training program – ‘DISCOVER YOUR TRUE POTENTIAL’ (3hrs)

*Indulge in a half-day experience with one of our PGA Golf Professionals, immersing yourself in the intricacies of the sport. Begin with a comprehensive analysis of your entire game at our practice facility, leveraging modern technology, specialized drills, practice strategies, and technical support.*

*Following your range session, transition to our clubrooms for a coffee, engaging in a relaxed conversation with your coach. After this refreshing break, venture onto the golf course or return to the range to apply and fine-tune the skills you've acquired. It's a holistic and personalized approach to enhancing your golf proficiency.*

***\*Sessions need to be booked well in advance.***

***\* Subject to coach availability***

Cost: \$329

## Full Day VIP training program – ‘TRAIN LIKE THE PROS’ 9:00am – 4:00pm

*Commence your day with an insightful coffee discussion indoors with one of our Golf Professionals.. Explore your golfing aspirations, strengths, and weaknesses while gaining a thorough understanding of our coaching philosophies and structures, proven to yield countless positive outcomes.*

*Embark on a valuable on-course assessment, providing crucial insights, before honing your skills at the practice facility. At mid-day, join your instructor for lunch in the clubrooms.*

*Return to refine your game in the afternoon, and to cap off the day, head back onto the golf course with your coach to apply your enhanced techniques and skills. Following the session, receive a detailed report and data summarizing your personalized experience. It's a comprehensive approach to elevating your golfing prowess.*

***\*Sessions need to be booked well in advance.***

***\* Subject to coach availability***

{ \$600 for one person / \$700 for two people }

# CLUB FITTING, TESTING and ASSESSMENTS:

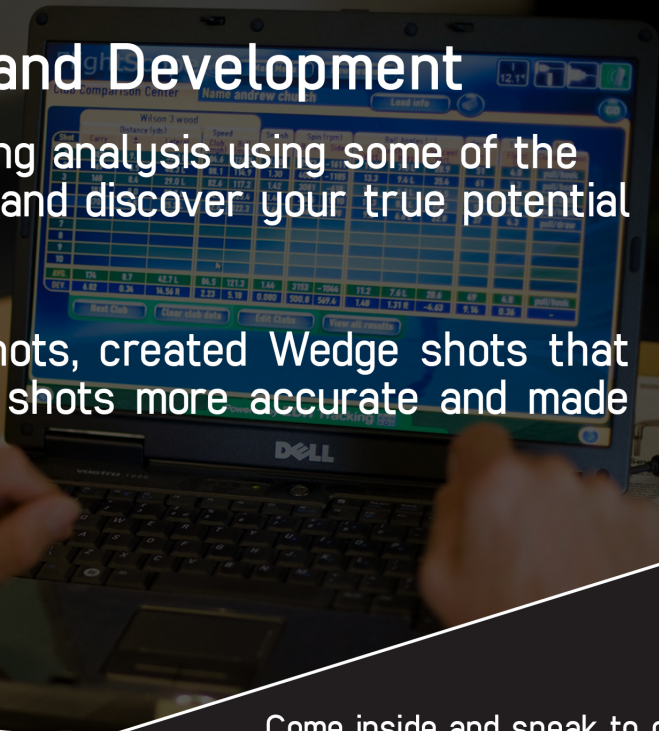


EXPERIENCE  
A TOUR LEVEL  
FITTING.

## Coaching, Club-Fitting and Development

Book in for an in-depth club fitting analysis using some of the latest technology on the market and discover your true potential

We've added 40 yards to tee shots, created Wedge shots that check and stop, made approach shots more accurate and made ball striking easier.



Come inside and speak to one of our PGA Professionals about a fitting.

[www.russleygolflearningcentre.com](http://www.russleygolflearningcentre.com)



**RUSSLEY**  
GOLF SHOP  
& LEARNING CENTRE

## ***CLUB FITTING Continued.....:***

*Book in for an in-depth club fitting analysis in our Trackman Golf Studio.*

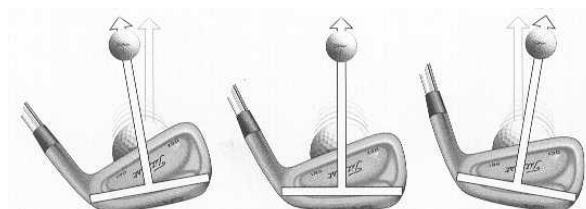
### ***Discover your true potential!***

*We have an extensive range of fitting gear for you to hit.*

***We specialize in Callaway, Titleist and PING , Mizuno and Wilson Golf equipment along with a wide range of other gear to cater to your needs.***

### ***Bookings are essential.***

- *1 Club → 30 minutes required*
- *Multiple clubs → 60 minutes required*



### *FACTS about Club Fitting...:*

- *A lie angle 4 degrees off, equates to 13m off line.*
- *An impact 1 inch off center face, equates to 9% loss of carry distance.*
- *If lie angles are too upright, shots tend to miss left and vice versa (see example above)*
- *Importance of correct club length (see examples below)*



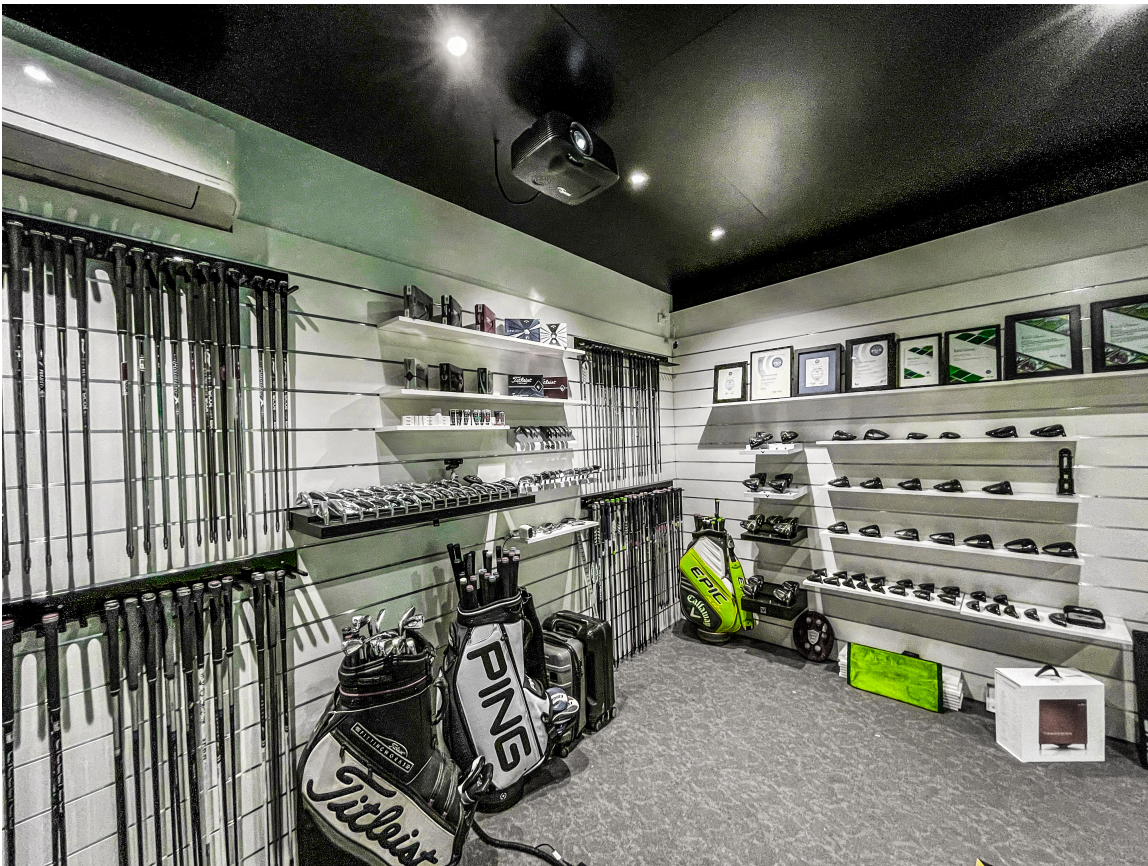
*If you equipment is more than 3 years old, you should come in for a check up and see if we can improve your overall golf performance!*



# Our NEW Trackman Golf Studio is here for all your COACHING and CLUBFITTING needs



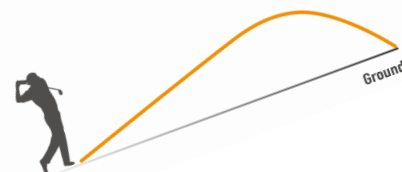
- *We specialize in Callaway, Titleist, PING, Mizuno and Wilson Golf*
- *Trackman Simulator (experience unmatched data quality at your fingertips)*
- *6 x Highly Skilled Golf Professionals*
- *Fantastic Outdoor and Indoor practice facilities*
- *Golf Shop is also stocked with FootJoy and Ecco footwear + a great range of Golf Training Aids*
- *Repair Workshop for all your repair and custom needs*





# THE TRACKMAN

## DISTANCE GAPPING SESSION



Participating in a distance gapping session offers valuable insights into the precise distances you achieve with each club, encompassing both carry and total distances. This analysis unveils the average gap between each of your clubs.

While you might have a general idea of your distances, there's no need to rely on guesswork when you can have accurate information. Building this knowledge is fundamental to instilling trust and confidence in your approach shots, ultimately contributing to an improved golf game.

This session, highly regarded and often described as a GAME CHANGER by our golfers, provides a clear understanding of your capabilities.

Moreover, by sharing your stats and additional data with your PGA coach, you empower them to offer tailored guidance, facilitating your continued development in the game. It's a practical and effective way to refine your skills and enhance your overall golfing experience.

**Cost: \$100**

### Rodney's Distances

*Winter conditions @ 10 degrees*

	<b>CARRY</b>	<b>TOTAL</b>
DRIVER	230	250-260
3 Wood	208	225-230
7 Wood	190	199
4 iron	175	187
5 iron	166	178
6 iron	153	163
7 iron	144	152
8 iron	133	140
9 iron	122	126
PW	111	113
AW (50 DEGREE)	100	102

### Rodney's Distances

*Summer conditions @ 25 degrees*

	<b>CARRY</b>	<b>TOTAL</b>
DRIVER	240-250	270-280
3 Wood	215	235-245
7 Wood	196	207
4 iron	181	194
5 iron	175	189
6 iron	164	175
7 iron	152	162
8 iron	141	147
9 iron	126	131
PW	120	122
AW (50 DEGREE)	109	111

# GOLF PACKAGES

## 10 Lesson Package

### **60 minutes session packages (Recommended)**

<i>Moonhak Lee</i>	@ \$1050
<i>Mark Guy</i>	@ \$1000
<i>Hillary O'Connor</i>	@ \$1000
<i>Shaun Jones</i>	@ \$950
<i>James Robinson</i>	@ \$850
<i>McKenzie Selinger</i>	@ \$850

### **30 minutes session packages**

<i>Moonhak Lee</i>	@ \$700
<i>Mark Guy</i>	@ \$650
<i>Hillary O'Connor</i>	@ \$650
<i>Shaun Jones</i>	@ \$600
<i>James Robinson</i>	@ \$550
<i>McKenzie Selinger</i>	@ \$550

- All sessions need to be scheduled in advance unless communicated with coach.

- Lessons expire 3 months from the date of purchase

- **Subject to coach availability**

### **Additional Benefits:**

- During the course of the Package, you will be entitled to member discounts:  
10% off any items purchases over \$100.
- Preferential members prices on range balls while you are having lessons with us

**Cancellations need at least 24hrs notice  
otherwise session will be charge**



# LEARN TO PLAY GOLF PROGRAM

(with 10 x FREE 9 Hole Rounds)



*Golf can be daunting with its multitude of rules, diverse clubs, and a language filled with terms like birdies, bogeys, and bump-and-runs.*

*While this may be second nature at the Russley Golf Shop & Learning Centre, we understand that this intricate language can be intimidating for those taking their first swing.*

*Introducing our Learn to Play program, designed explicitly for golf novices. Our aim is to guide you through the unknowns: How should you swing the club? Which club is best for chipping? When is the right time to hit the golf course?*

*Learn to Play is your compass, leading you through the fundamental aspects of the game until you feel self-assured enough to venture onto the course.*

*This comprehensive program includes a high-quality 10-week coaching initiative led by a Golf Professional. As an added bonus, you'll receive 10 complimentary 9-hole rounds at the Russley Golf Club, providing practical opportunities to apply your newfound skills in a real-game setting. It's a systematic and supportive approach to help you grasp the basics and step onto the golf course with confidence.*

**The program is designed for people who have never been a member of a golf club before OR had an official handicap**

## ***Learn to Play includes:***

*Embark on a 10-week journey with our private lesson program, consisting of 10 individual 30-minute sessions. Delve into the foundational elements of the game, including putting, chipping, pitching, and the full swing. For those eager to learn with friends, we also provide semi-private programs tailored for 2-4 participants. These extended 60-minute sessions not only cover the basics but also include on-course sessions, fostering a collaborative and enriching learning experience. Whether solo or in a small group, our programs are designed to nurture your golfing skills and build confidence on the course.*

*Enjoy the perks of our program with 10 rounds of 9-hole green fees, convertible into 5 rounds of 18 holes. If you're feeling confident and eager to transition from coaching to on-course play sooner, this option is available to you. To enhance your comfort and enjoyment, we recommend scheduling these rounds after 1 pm from Sunday to Friday and after 4 pm on Saturdays, taking advantage of quieter course times. It's a flexible and accommodating way to seamlessly integrate your newfound skills into real-game scenarios at your own pace.*

*Rest assured, what may have initially appeared complex is truly as simple as stepping out and having fun with our Learn to Play program and membership at Russley. We've designed a straightforward and enjoyable pathway for you to embrace the game, making the learning process both accessible and enjoyable. Join us, and let's turn the seemingly intricate into a journey of simplicity and joy on the golf course.*

<b>1 PLAYER</b>	\$700 / \$1050 (60min)
<b>2 PLAYERS</b>	\$650 each
<b>3-4 PLAYERS</b>	\$600 each

***\* Subject to coach availability***

***Cancellations need at least 24hrs notice otherwise session will be charge.***

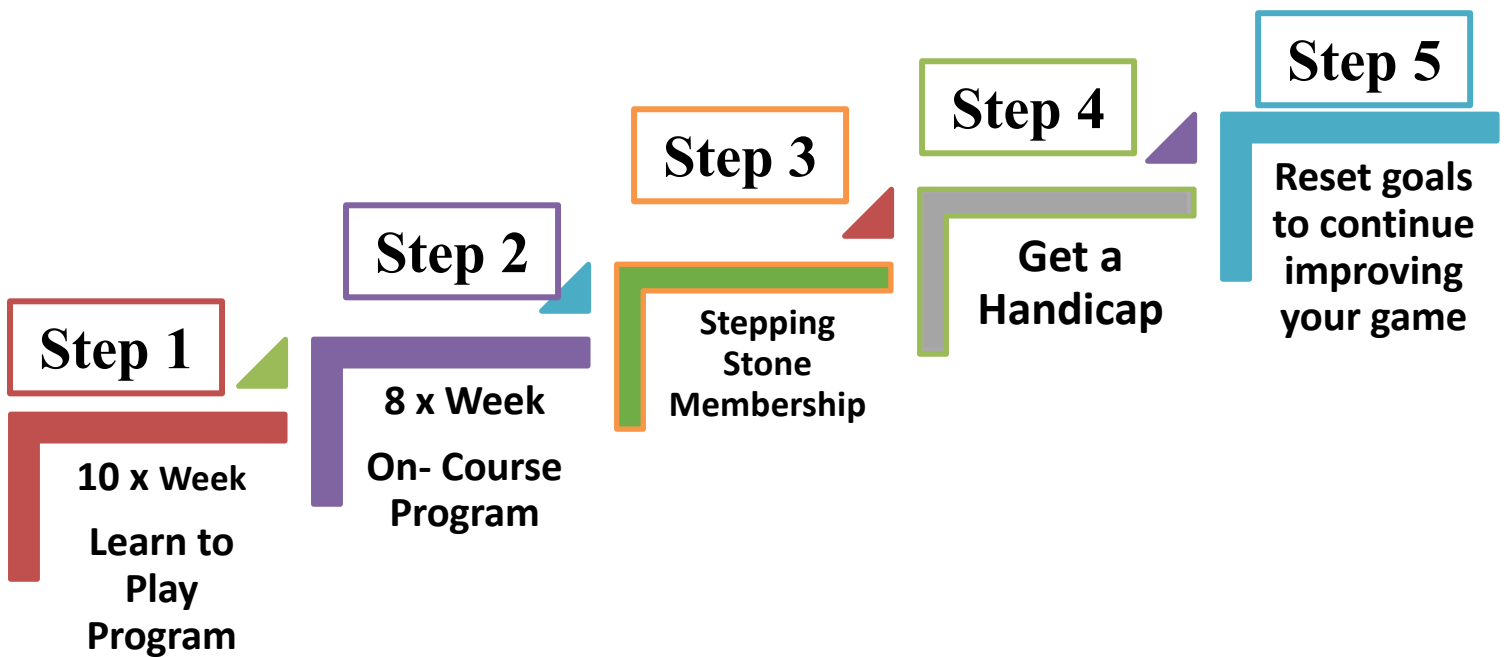


Russley Golf Shop  
& Learning Centre

# ‘YOUR PATHWAY INTO GOLF

*AT THE RUSSLEY GOLF LEARNING CENTRE*

## The 6 month Plan



## **STEP 1**

### **Learn to Play Program + 10x 9 Hole Rounds**

- 10 x 30 minute lessons on the Driving Range learning the 4 x basic skills (Putting, Chipping, Pitching and Full Swing)
  - Getting set up with the right equipment
- Approximate time: 2-3 Months

## **STEP 2**

### **Learn to Play- On-Course Program**

**Cost: \$750 (individual) + \$100 per extra player**

- 8 x 60 min sessions on the golf course learning how to implement the learnt skills on the course, understanding the etiquette/rules and course management.

## **STEP 3**

### **Stepping Stone Membership**

**Cost \$500**

Once the Learn To Play programme is completed after 3 months, the Stepping Stone membership is available for a further 9 months for those who have never been a member of a golf club before.

## **STEP 4**

### **Get a Handicap**

- Play and hand in 5 x 18 hole cards (or 10x 9 hole cards) to get an official handicap
- Approximate time: 1-1.5 months

## **STEP 5**

### **Reset goals to further improve your game**

- Reset your goals and aim to improve your handicap, technique, skill etc.
- Get a personalized Coaching Program and Plan

# RUSSLEY JUNIOR COACHING PROGRAMME



Junior  
Golf

**START AN ADVENTURE OF A LIFETIME!**

- 10 weeks group coaching

**Total \$250 per term**

Join as a Russley junior member and receive \$50 off each term coaching fee plus the following member benefits:

- Members rates for Golf Shop and driving range
- Access to course and practice facilities
- Ability to play in club competition and representative teams
- Ability to get a handicap!

LOVE  GOLF.  
1916

**futures**



# **RUSSLEY JUNIOR GOLF COACHING PROGRAMME**



## **TERM DATES 2024**

**Term 1: 10th February - 12th April**

**Term 2: 4th May - 7th July**

**Term 3: 27th July - 29th September**

**Term 4: 19th October - 22th December**

### **Cancellations:**

If there is bad weather or a coach is unavailable, credit will be added to the next term fee. The coach will contact you via text or email if there is a cancellation.

### **Term fees:**

Each term will players will be sent an invoice.

### **Golf lesson check list:**

- Each player is to have their own golf clubs
- Drink bottle
- Warm jacket/Uniform
- Hat

More info:

[www.russleygolflearningcentre.com](http://www.russleygolflearningcentre.com)

Contact us:

[golfshop@russleygc.co.nz](mailto:golfshop@russleygc.co.nz)

Ph: 358 4612

# What is FUTURES?

Futures aims to capture the imagination of young people of all skill levels and backgrounds to be active for life, meet new friends, develop valuable life skills and provide opportunities for families to learn and play together.

That's why it's more than a game, it's an investment in brighter futures.

To get started in golf you can just have a go at the driving range, learn new skills through coaching, or play with your friends on course.

## *START AN ADVENTURE OF A LIFETIME!*

Futures has three progressive stages to inspire a lifelong love of the game. Each stage has offerings for coaching, playing formats, events and experiences to support young people to learn at their own pace and are appropriate for their stage of development.



New players who are starting their journey in golf have the opportunity to learn new skills, have fun, make new friends and can just have a go at smashing balls, hitting targets and watching it fly!



Young golfers who are growing a love for the game, have the opportunity to learn valuable life skills through golf and develop their confidence and skills on modified course lengths.



Young golfers who have aspirations to develop their skills as a player, loves the game for the personal challenge and variety of competitive opportunities but also for those who enjoy being outdoors and playing for fun with their friends and family.



# PRACTICE FACILITIES



## RANGE BALL HIRE:

	<b>VISITORS</b>	<b>MEMBERS</b>
<b>SMALL BUCKET (40 balls)</b>	\$12	\$6
<b>MEDIUM BUCKET (70 balls)</b>	\$17	\$9
<b>LARGE (110 balls)</b>	\$22	\$12

## RANGE BALL CONCESSION CARDS:

	<b>VISITORS</b>	<b>MEMBERS</b>
<b>12 x Small Bucket</b>	\$120	\$60
<b>12 X Medium Bucket</b>	\$170	\$90
<b>12 x Large Bucket</b>	\$220	\$120



# THE TEAM

## **Hillary O'Connor**

*NZPGA Golf Professional since 2020*

*Hillary is a warm, friendly and enthusiastic member of Russley's coaching team.*

*Her love for golf started at an early age, playing for both the Canterbury region and New Zealand respectively. Playing golf for over 15 years, she has a great understanding of the game.*

*As a coach, Hillary believes communication is at the forefront of the lesson, her bubbly and high spirited nature will have you leaving the golf course full of energy, with some basic pointers to focus on in your game.*

*Hillary's passion is to make people smile and feel comfortable, so get in touch with her now if your golf game needs a bit of help. She'll brighten your day and your golf game!*



## **MOONHAK LEE**

*NZPGA Professional since 2016*

*We are super excited to introduce Moonhak to our Russley Learning Centre Team!*

*Born in South Korea, Moon is fluent in both English and Korean and has a wealth of experience in instructing junior groups as well as long-term private mentoring golfers of all age, skill, and experience.*

*Moon started playing golf at the age of 12 and has represented Canterbury in junior and senior level.*

*Moon is a passionate coach with over 5 years of experience in coaching, guiding, and designing effective training programs to help players reach their maximum level of performance in a fun and easy way.*

*Moon is well known for his friendly, light-hearted character who enjoys building positive professional connections and rapport with his clientele.*

*Slices, hooks and any fix you need, Moon will help you to raise your game for maximum enjoyment!*



## Shaun Jones

*Former professional Tour player, now ready to let you know everything I have learnt over my last 25+ years playing the greatest game in the world and fast track you to success.*

*Started golf at a young age, but become my main sport when I was 14 years old. Which is when I joined Russley Golf Club as a junior member.*

*I represented Canterbury golf for 8 years.*

*Vardon Trophy Winner 2009 - 2010*

*Canterbury Player of the Year 2009 - 2010 - 2011*

*Turn professional in 2014 (on a +4 handicap) as I went to the NZPGA qualifying school which I won by 6 shots. That's was my ticket into my next 10 years playing professional golf throughout New Zealand and Europe on the Alps Tour.*

*Played in 2 New Zealand Opens and 2 NZ PGA Championships.*

*Best round as professional was 8 under par in the 2 round of the 2017 NZ PGA Championship.*

*I look forward to getting to know you, working with you and taking your game to the next level.*



## **Mckenzie Selinger**

*At just 20 years old, McKenzie is distinguished by his dedication, passion, and a coaching style that balances enjoyment with effectiveness. He excels in guiding players toward their goals through structured sessions and personalized plans that build confidence and enhance skills.*

*McKenzie's exceptional attention to detail is evident in his own golf game.*

*McKenzie began his golfing journey at 14 with the Russley Junior Group and has since represented Russley in various junior and senior teams.*

*As he prepares to begin his PGA apprenticeship next year, McKenzie is well-positioned to help you build confidence and elevate your game.*





## **Mark Guy**

*PGA Professional since 1983*

*Mark's professional career began in Melbourne, Australia 1979, as a Trainee at Mornington Country Club, Victoria. After returning to New Zealand and playing the professional golf circuit for a time, he was appointed Resident Professional at the Christchurch Golf Club in 1983 and later Harewood Golf Club in 1988. Predominantly as a Teaching Professional, coaching experiences have covered a broad cross-section of golfers, genders & ages, including social and competitive settings, from beginner students to more accomplished players having higher performance aspirations.*

*In 1993 School of Golf NZ Ltd was established at Harewood, and in 1998 began a coaching role at Russley with interest in member & interclub team development, namely Woodward Cup. In addition, he has had the privilege of being the Canterbury Golf Coach and is proud to have been 'Team-Coach' to many age-group junior and senior golf teams over the years.*

*The most notable and memorable of these team events were:*

*National Interprovincial Matchplay Championships (Runner-up 1996, Winner 1998)*

*National Interprovincial Strokeplay Championships (Winner 1996 / 97)*

*South Island Interprovincial (1997 / 98)*

*Triangular – Blenheim (1996 /97 /98)*

*Age Group (Under 21 South Island Championships x 8 wins)*

*Senior Over 40s (Runner-up)*

*Mark's coaching philosophy, whatever the golfing aspiration, sees instruction serving to motivate learning and encourage better Technical Awareness across all Physical, Mental and Psychological divides. Learning the game and how it's played extends to a shared teacher/student commitment to better understand how to train, practice & perform on-course.*

*Player preferences aside, underpinning Mark's Traditional Teaching Approach is The Fundamentals or Ten Major Movements. Developing a proper understanding of Golf Mechanics resulting in greater Technical Awareness extends to Awareness of Routine leading to Higher-Performance Awareness and moving to Competition Awareness under tournament pressures & conditions.*



## **James Robinson**

*NZPGA Gateway Golf Coach*

*James is the latest member of our coaching staff to join us at the Russley Learning Centre. James has been a passionate golfer for most of his adult life and has an extensive background in working with young people through his career as a Primary School Teacher.*

*James has coached and instructed young people in many sports and played golf all over the world including learning at the Butch Harmon School of Golf in Dubai. James has completed the PGA Gateway Coaching Certificate and is excited to be coaching juniors and people new to the game. James uses a fun, games based approach in his junior coaching where student enjoyment is at the forefront of every lesson. With the more developed players, James loves discussing swing mechanics and is passionate about helping golfers improve their golf.*

*We are excited to have James join our team to look after our junior golf program space as well as helping new golfers transition into the game of golf.*



